

RASCOtec Crack Inducer

INJECTION SYSTEM

INJECTION SYSTEMS

The RASCOtec injection system is a comprehensive system consisting of different profile types. This allows it to be used optimally for various technical requirements, such as waterproofing construction joints, crack control joints, expansion joints or penetrations. The profiles of the RASCOtec injection system are always installed in the concrete. Once the concrete has hardened, the RASCOtec injection systems are injected using RASCOflex injection resins. The advantage of using the RASCOtec injection system is that the subsequent injection can be carried out efficiently and in a controlled manner, whereby neighbouring defects are usually sealed automatically. The choice of injection medium should always be based on the functional requirements and the conditions of the application.

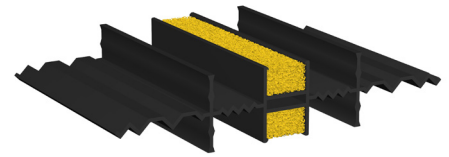
The profiles of the RASCOtec injection systems have been specially developed to generate the largest possible opening to the joint, with the fine-pored, open-cell carrier foam in the opening serving as a permanent material depot. Particularly when used with acrylates/gels, such as the injection materials in the RASCOflex AY series, the material depot has a very positive effect on the permanent sealing of any joint openings that may subsequently occur.

USE

The RASCOtec Crack inducer is a plastic profile with wavy side sections and applied crossbars. This profile shape achieves an interlocking of the concrete that supports the requirements of shear force transmission. The injection channel is positioned in the centre and on both sides, allowing both halves of the component to be injected economically.

The RASCOtec Crack inducer is used for the targeted formation of cracks and their permanent waterproofing in the newly created concreting section. The RASCOtec crack inducer system is inserted into the reinforcement according to a predetermined grid before concreting. This divides a concreting stage into 'shrinkage sectors' and the contractor can maximise the planned concreting stages and shorten the construction time accordingly, without increasing the risk of unwanted cracking. The positioning of the RASCOtec crack inducer is calculated and approved by an engineer or structural engineer.

The profile width to be selected for the RASCOtec crack inducer is in proportion to the component thickness. The usual standard is 2/3 of the component thickness. When using RASCOtec crack inducer in wider component thicknesses of over 30 cm, they must be widened accordingly. RASCOtec widening plates are used for this purpose.



Further product info



LEGAL NOTICE: The information provided on the use and application of our products in this technical data sheet is based on the present state of our knowledge. The customer shall bear sole responsibility for the proper specification, application and use of the products in line with the intended purpose, project-specific conditions and external actions. The most recent technical data sheet shall apply. The current technical data sheets are available at www.rascor.com. Our General Terms of Business shall form an integral part of this technical data sheet.

RASCOR International Ltd.
Gewerbstrasse 4
CH-8162 Steinmaur / Switzerland
Phone: +41 (0) 44 857 11 11
www.rascor.com
info@rascor.com

RASCOR Construction Chemicals GmbH
Ratsgasse 6
DE-97688 Bad Kissingen / Germany
Phone: +49 (0) 971 130 27 38
www.rascor.com
badkissingen@rascor.com

RASCOtec Crack Inducer

INJECTION SYSTEM

TECHNISCHE / PHYSIKALISCHE DATEN

	Section	Foam strip	Extension board
Size	length 250 cm width 200 mm height 40 mm	length 250 cm width 25 mm height 20 mm	length 250 cm width 100 cm thickness 3 mm
Colour	black	yellowish	yellow-yellow-yellow grained surface
Supplied form	solid	solid	solid
Chemical base	polyethylene (HDPE)	polyester	polypropylene (PPC)
Hazardous goods/ADR	none	none	none
Storage/shelf life	unlimited	unlimited	unlimited

LIEFERFORM/ADDITIVE

Art. Nr.	Produkt	Gebinde	Inhalt
1102.1201.013	RASCOtec Crack inducer B13, onesided enlargement	bundle	20 m
1102.1201.015	RASCOtec Crack inducer B15, onesided enlargement	bundle	20 m
1102.1201.018	RASCOtec Crack inducer B18, onesided enlargement	bundle	20 m
1102.1201.020	RASCOtec Crack inducer B20, onesided enlargement	bundle	20 m
1102.1202.030	RASCOtec Crack inducer B30, onesided enlargement	bundle	20 m
1102.1202.040	RASCOtec Crack inducer B40, onesided enlargement	bundle	20 m
1102.1202.050	RASCOtec Crack inducer B50, onesided enlargement	bundle	20 m
1102.1081.003	RASCOtec Feeder cap	bag	100 pcs
1102.1082.003	RASCOtec Connector cap	bag	50 pcs
1102.1083.001	RASCOtec Target	box	100 pcs
1102.1085.003	RASCOtec Stopper cap	bag	100 pcs
1102.1021.002	RASCOtec Extension board	pc	2,5 m2
1190.0101.001	RASCOfix Cable tie 20 cm	bag	100 pcs
1190.0102.001	RASCOfix Cable tie 40 cm	bag	100 pcs
1190.0103.001	RASCOfix Cable tie 70 cm	bag	100 pcs
1205.0302.001	Feeder hose 18 mm	roll	50 m



RASCOtec Crack Inducer

INJECTION SYSTEM

APPLICATION/PREPARATION

The RASCOtec Crack inducer shall be fixed at the required position between the two reinforcement layers using stirrups. A triangular fillet may be additionally inserted in the formwork so as to form a crisp, straight dummy joint in the wall on the exposed face. The width of the crack inducer shall in all cases be at least 2/3 the element thickness. With slender elements of thickness less than 40 cm, the crack inducer shall always extend from inner to outer or top to bottom reinforcement. The spacing of the crack-inducing units always requires prior calculation as it depends on the reinforcement. Widened crack-inducing units shall always be incorporated in such a way as to ensure that the base units abut the reinforcement (on the later grouting side).

Should the base unit need widening, the RASCOtec Crack inducer may be either purpose-made and supplied ready for use or widened with RASCOtec Extension board as required on site. Please check installation guideline RASCOtec Crack inducer for further instructions.

GENERAL GUIDELINES / SAFETY NOTICE

To prevent buckling during concreting, a sufficient number of support stirrups shall be incorporated and care shall be taken when pouring concrete near the crack inducer. Where a triangular fillet is inserted to form a straight crack (dummy joint), it shall be fixed in the line of the RASCOtec Crack inducer.

No special safety instructions are required

DISPOSAL

Fragments or residual remnants can be disposed of in regular household waste or dedicated plastic collections.

FEATURES

- controlled shrinkage cracks
- may be widened to suit requirements with RASCOtec Extension board (composite panel)
- may be worked as wood
- weldable
- weather-independent installation
- uninterrupted installation of the profile elements (no sector formation!)
- profile made from partially recycled, environmentally friendly

EXPERT REPORTS

- Conformity certificate, Asendorf Bauchemie Consult GmbH, Wiesbaden, Germany



assembly video



LEGAL NOTICE: The information provided on the use and application of our products in this technical data sheet is based on the present state of our knowledge. The customer shall bear sole responsibility for the proper specification, application and use of the products in line with the intended purpose, project-specific conditions and external actions. The most recent technical data sheet shall apply. The current technical data sheets are available at www.rascor.com. Our General Terms of Business shall form an integral part of this technical data sheet.

RASCOR International Ltd.
CH-8162 Steinmaur / Switzerland
Phone: +41 (0)44 857 11 11

RASCOR Construction Chemicals GmbH
D-97688 Bad Kissingen / Germany
Phone: +49 (0)971 130 27 38